



Light Output Ratio:	83.7%	
Luminaire Power:	48.76 W	
SHR Nominal:	0.50	Calculated using the TM5
SHR Maximum:	0.65	fine grid method.

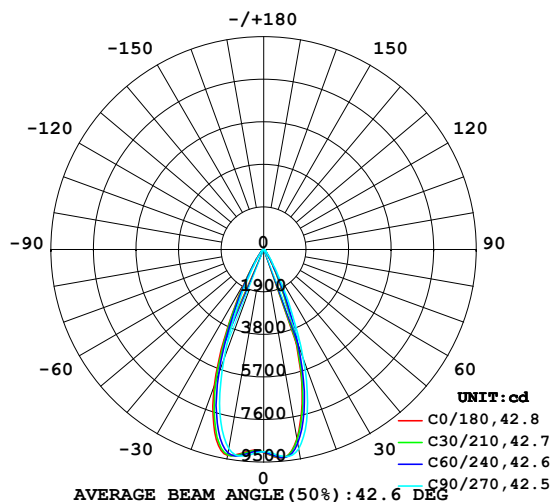
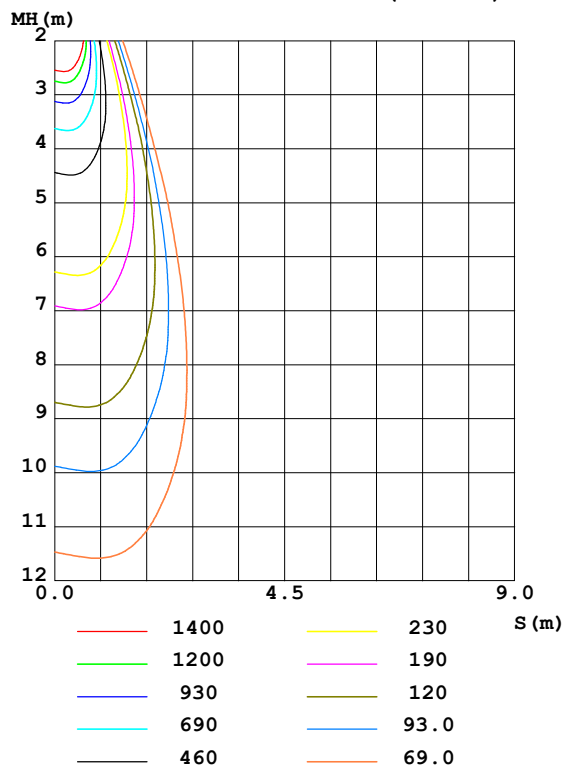
C Range: 0 - 360DEG  
 C Interval: 30.0DEG  
 Test Speed: HIGH  
 Temperature: 25.3DEG  
 Operators: DAMIN  
 Test Date: 2023-08-23

γ Range: 0 - 90DEG  
 γ Interval: 1.0DEG  
 Test System: EVERFINE GO-2000A\_V1 SYSTEM V2.00.444  
 Humidity: 65.0%  
 Test Distance: 10.214m [K=1.0000]  
 Remarks:

**LUMINAIRE PHOTOMETRIC TEST REPORT**

Test:U:34.832V I:1.3999A P:48.761W PF:1.0000 Freq:0Hz Lamp Flux:5880x1 lm		
NAME: LYE-8053A	TYPE: LED	WEIGHT:
SPEC.:	DIM.:	SERIAL No.: 2300203
MFR.: Cosine	SUR.:	Shielding Angle:

DATA OF LAMP		PHOTOMETRIC DATA Eff: 100.90 lm/W			
MODEL	CXB1512	I <sub>max</sub> (cd)	9339	S/MH(C0/180)	0.70
NOMINAL POWER(W)	49	LOR(%)	83.7	S/MH(C90/270)	0.64
RATED VOLTAGE(V)	35	TOTAL FLUX(lm)	4919.8	η UP,DN(C0-180)	0.0,40.4
NOMINAL FLUX(lm)	5880	CIE CLASS	DIRECT	η UP,DN(C180-360)	0.0,43.2
LAMPS INSIDE	1	η up(%)	0.0	CIBSE SHR NOM	0.50
TEST VOLTAGE(V)	35	η down(%)	83.7	CIBSE SHR MAX	0.65

**LUMINOUS INTENSITY DISTRIBUTION DIAGRAM**

**C0 PLANE ISOLUX DIAGRAM (UNIT:lx)**


C Range: 0 - 360DEG  
C Interval: 30.0DEG  
Test Speed: HIGH  
Temperature:25.3DEG  
Operators:DAMIN  
Test Date:2023-08-23

γ Range: 0 - 90DEG  
γ Interval: 1.0DEG  
Test System:EVERFINE GO-2000A\_V1 SYSTEM V2.00.444  
Humidity:65.0%  
Test Distance:10.214m [K=1.0000]  
Remarks:

**ZONAL FLUX DIAGRAM**
**ZONAL FLUX DIAGRAM:**

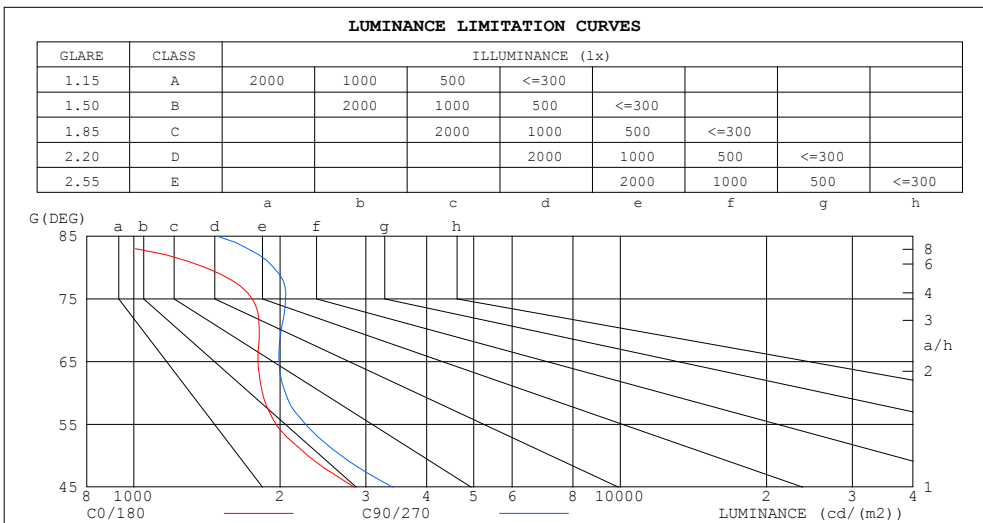
$\gamma$	C0	C45	C90	C135	C180	C225	C270	C315	$\gamma$	$\Phi$ zone	$\Phi$ total	%lum, lamp
10	8586	8711	9042	9217	9333	9269	9024	8751	0- 10	875.6	875.6	17.8,14.9
20	4008	4343	5172	5993	6456	6063	5220	4418	10- 20	2037	2912	59.2,49.5
30	803.5	874.5	1154	1489	1700	1525	1192	901.6	20- 30	1290	4202	85.4,71.5
40	220.3	234.3	280.8	337.6	366.5	340.7	285.5	238.9	30- 40	375.2	4578	93,77.9
50	107.1	111.3	125.5	139.2	144.3	137.6	126.8	114.8	40- 50	143.5	4721	96,80.3
60	67.15	68.93	74.85	79.95	81.55	78.80	74.98	70.37	50- 60	85.89	4807	97.7,81.8
70	45.21	46.48	50.16	53.24	54.67	53.18	50.45	47.04	60- 70	60.93	4868	98.9,82.8
80	17.79	19.69	24.59	29.05	31.36	29.44	25.01	20.15	70- 80	40.33	4908	99.8,83.5
90	0.3530	0.3570	0.3610	1.163	0.7300	1.107	0.7060	0.4533	80- 90	11.46	4920	100,83.7
100									90-100			
110									100-110			
120									110-120			
130									120-130			
140									130-140			
150									140-150			
160									150-160			
170									160-170			
180									170-180			
DEG	LUMINOUS INTENSITY:cd									UNIT:lm		

C Range: 0 - 360DEG  
 C Interval: 30.0DEG  
 Test Speed: HIGH  
 Temperature:25.3DEG  
 Operators:DAMIN  
 Test Date:2023-08-23

$\gamma$  Range: 0 - 90DEG  
 $\gamma$  Interval: 1.0DEG  
 Test System:EVERFINE GO-2000A\_V1 SYSTEM V2.00.444  
 Humidity:65.0%  
 Test Distance:10.214m [K=1.0000]  
 Remarks:

**LUMINANCE LIMITATION CURVES**

Test:U:34.832V I:1.3999A P:48.761W PF:1.0000 Freq:0Hz Lamp Flux:5880x1 lm		
NAME: LYE-8053A	TYPE: LED	WEIGHT:
SPEC.:	DIM.:	SERIAL No.: 2300203
MFR.: Cosine	SUR.:	Shielding Angle:



LUMINANCE cd/(m2)		
G (DEG)	C0/180	C90/270
85	484	1482
80	1404	1940
75	1751	2053
70	1811	2009
65	1801	1989
60	1840	2051
55	1961	2258
50	2282	2674
45	2841	3406

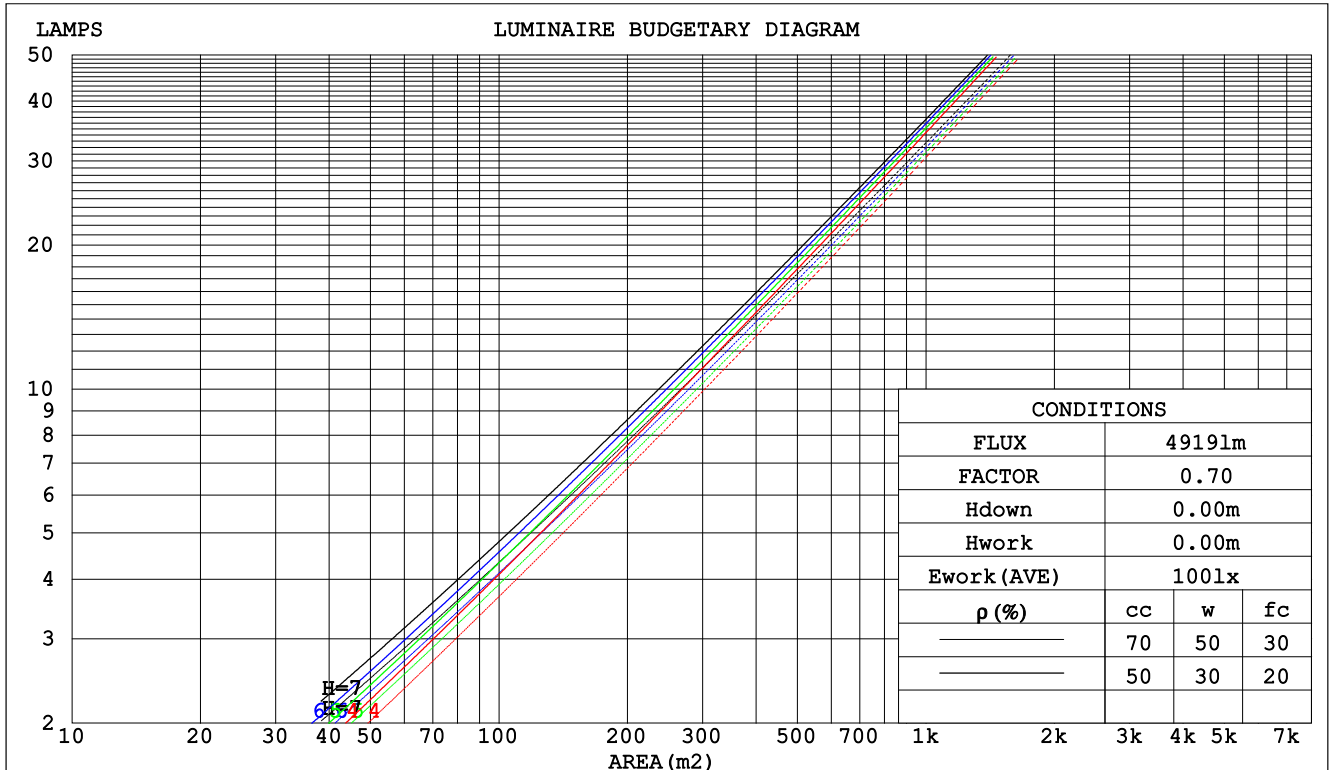
C Range: 0 - 360DEG  
 C Interval: 30.0DEG  
 Test Speed: HIGH  
 Temperature:25.3DEG  
 Operators:DAMIN  
 Test Date:2023-08-23

γ Range: 0 - 90DEG  
 γ Interval: 1.0DEG  
 Test System:EVERFINE GO-2000A\_V1 SYSTEM V2.00.444  
 Humidity:65.0%  
 Test Distance:10.214m [K=1.0000]  
 Remarks:

**CU AND LUMINAIRE BUDGETARY ESTIMATE DIAGRAM**

Test:U:34.832V I:1.3999A P:48.761W PF:1.0000 Freq:0Hz Lamp Flux:5880x1 lm		
NAME: LYE-8053A	TYPE: LED	WEIGHT:
SPEC.:	DIM.:	SERIAL No.: 2300203
MFR.: Cosine	SUR.:	Shielding Angle:

pcc	80%			70%			50%			30%			10%			0
pw	50%	30%	10%	50%	30%	10%	50%	30%	10%	50%	30%	10%	50%	30%	10%	0
pfc	20%			20%			20%			20%			20%			0
RCR	RCR:Room Cavity Ratio			Coefficients of Utilization(CU)												
0.0	.00	.00	.00	.97	.97	.97	.93	.93	.93	.89	.89	.89	.85	.85	.85	.84
1.0	.93	.91	.89	.91	.90	.88	.88	.87	.85	.85	.84	.83	.82	.81	.80	.79
2.0	.87	.84	.82	.86	.83	.81	.83	.81	.79	.81	.79	.77	.78	.77	.76	.74
3.0	.82	.79	.76	.81	.78	.75	.79	.76	.74	.77	.75	.73	.75	.73	.71	.70
4.0	.78	.74	.71	.77	.73	.70	.75	.72	.69	.74	.71	.69	.72	.70	.68	.67
5.0	.74	.70	.66	.73	.69	.66	.72	.68	.65	.70	.67	.65	.69	.66	.64	.63
6.0	.70	.66	.63	.70	.66	.63	.68	.65	.62	.67	.64	.62	.66	.63	.61	.60
7.0	.67	.63	.60	.67	.62	.59	.66	.62	.59	.65	.61	.59	.64	.61	.58	.57
8.0	.64	.60	.57	.64	.59	.57	.63	.59	.56	.62	.59	.56	.61	.58	.56	.55
9.0	.61	.57	.54	.61	.57	.54	.60	.57	.54	.60	.56	.54	.59	.56	.54	.53
10.0	.59	.55	.52	.59	.54	.52	.58	.54	.52	.57	.54	.51	.57	.54	.51	.50



C Range: 0 - 360DEG  
 C Interval: 30.0DEG  
 Test Speed: HIGH  
 Temperature:25.3DEG  
 Operators:DAMIN  
 Test Date:2023-08-23

γ Range: 0 - 90DEG  
 γ Interval: 1.0DEG  
 Test System:EVERFINE GO-2000A\_V1 SYSTEM V2.00.444  
 Humidity:65.0%  
 Test Distance:10.214m [K=1.0000]  
 Remarks:

**UGR(Unified Glare Rating) Table**

<b>Test:U:34.832V I:1.3999A P:48.761W PF:1.0000 Freq:0Hz</b> <b>Lamp Flux:5880x1 lm</b>										
<b>NAME: LYE-8053A</b>					<b>TYPE: LED</b>			<b>WEIGHT:</b>		
<b>SPEC.:</b>					<b>DIM.:</b>			<b>SERIAL No.: 2300203</b>		
<b>MFR.: Cosine</b>					<b>SUR.:</b>			<b>Shielding Angle:</b>		
ceiling/cavity	0.7	0.7	0.5	0.5	0.3	0.7	0.7	0.5	0.5	0.3
walls	0.5	0.3	0.5	0.3	0.3	0.5	0.3	0.5	0.3	0.3
working plane	0.2	0.2	0.2	0.2	0.2	0.2	0.2	0.2	0.2	0.2
Room dimensions	Viewed crosswise					Viewed endwise				
x = 2H y = 2H	2.7	3.5	2.9	3.7	3.8	3.5	4.3	3.7	4.5	4.6
3H	3.7	4.5	3.9	4.7	4.9	4.4	5.2	4.7	5.4	5.6
4H	4.2	5.0	4.5	5.2	5.4	5.0	5.7	5.2	5.9	6.1
6H	4.6	5.3	4.9	5.5	5.7	5.4	6.1	5.7	6.3	6.6
8H	4.6	5.3	4.9	5.5	5.8	5.6	6.2	5.9	6.5	6.7
12H	4.6	5.3	4.9	5.5	5.8	5.6	6.3	5.9	6.5	6.8
4H 2H	3.0	3.8	3.3	4.0	4.2	3.7	4.5	4.0	4.7	4.9
3H	4.3	5.0	4.6	5.2	5.5	4.9	5.6	5.2	5.8	6.1
4H	5.0	5.6	5.3	5.9	6.2	5.6	6.2	6.0	6.5	6.8
6H	5.4	6.0	5.8	6.3	6.6	6.2	6.7	6.6	7.0	7.4
8H	5.5	6.0	5.9	6.4	6.7	6.4	6.9	6.8	7.2	7.6
12H	5.5	6.0	5.9	6.3	6.7	6.5	6.9	6.9	7.3	7.7
8H 4H	5.2	5.7	5.6	6.1	6.4	5.8	6.3	6.2	6.6	7.0
6H	5.8	6.2	6.2	6.6	7.0	6.5	6.9	6.9	7.3	7.7
8H	5.9	6.3	6.4	6.7	7.1	6.7	7.1	7.2	7.5	7.9
12H	5.9	6.2	6.4	6.7	7.2	6.9	7.2	7.3	7.6	8.1
12H 4H	5.2	5.7	5.6	6.0	6.4	5.8	6.2	6.2	6.6	7.0
6H	5.8	6.2	6.3	6.6	7.0	6.5	6.9	6.9	7.3	7.7
8H	6.0	6.3	6.4	6.7	7.2	6.8	7.1	7.2	7.5	8.0
Variations with the observer position at spacings(CIE Pub.117):										
S = 1.0H	+ 0.4 / - 0.5					+ 0.7 / - 0.5				
1.5H	+ 0.8 / - 0.4					+ 1.4 / - 0.4				
2.0H	+ 0.6 / - 0.4					+ 0.7 / - 0.3				

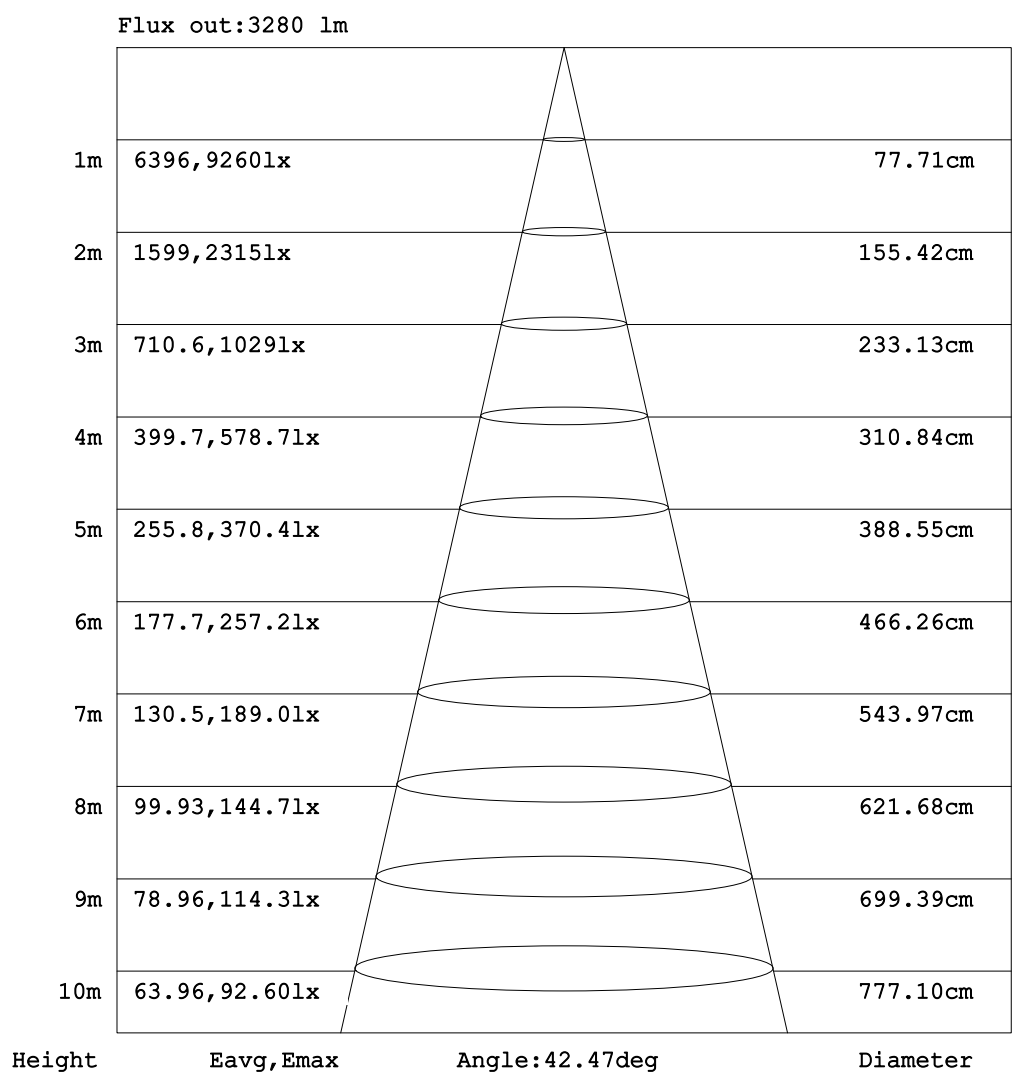
CIE Pub.117, 5880 lm Total Lamp Luminous Flux Correct (8log(F/F0) = 6.2)  
Area: 0.073 m2

C Range: 0 - 360DEG  
C Interval: 30.0DEG  
Test Speed: HIGH  
Temperature:25.3DEG  
Operators:DAMIN  
Test Date:2023-08-23

γ Range: 0 - 90DEG  
γ Interval: 1.0DEG  
Test System:EVERFINE GO-2000A\_V1 SYSTEM V2.00.444  
Humidity:65.0%  
Test Distance:10.214m [K=1.0000]  
Remarks:

**AAI Figure**

Test:U:34.832V I:1.3999A P:48.761W PF:1.0000 Freq:0Hz Lamp Flux:5880x1 lm		
NAME: LYE-8053A	TYPE: LED	WEIGHT:
SPEC.:	DIM.:	SERIAL No.: 2300203
MFR.: Cosine	SUR.:	Shielding Angle:



**Note:**The Curves indicate the illuminated area and the average illumination when the luminaire is at different distance.

C Range: 0 - 360DEG  
C Interval: 30.0DEG  
Test Speed: HIGH  
Temperature:25.3DEG  
Operators:DAMIN  
Test Date:2023-08-23

γ Range: 0 - 90DEG  
γ Interval: 1.0DEG  
Test System:EVERFINE GO-2000A\_V1 SYSTEM V2.00.444  
Humidity:65.0%  
Test Distance:10.214m [K=1.0000]  
Remarks:

