

### GENERAL

- PATTERNS CONSISTING OF (1) OR (2) TIERS CAN BE FED FROM A SINGLE POWER SUPPLY AS LONG AS THE TOTAL FIXTURE WATTAGE DOES NOT EXCEED THE POWER SUPPLY CAPACITY
- FULLY ENCLOSED (2) TIER PATTERNS MUST CONTAIN ONE **5** AT032D-00 NON-POWER CONDUCTING CONNECTOR TO PREVENT A SHORT CIRCUIT CONDITION
- ADDITIONAL TIERS MUST BE FED FROM SEPARATE POWER SUPPLIES (2 PER POWER SUPPLY)
- TIERS ARE JOINED VIA NON-POWERED 4" OR 8" STEMS BETWEEN CONNECTORS, IF DESIRED
- WHEN USING AIMABLE FIXTURES ON STRAIGHT RUNS OF CABLE-MOUNTED METROLINE RAIL, THE OFFSET WEIGHT OF THE ADJUSTED FIXTURES MAY CAUSE THE RAIL TO HANG AT AN ANGLE (SEE ILLUSTRATION BELOW); INTERMITTENT RIGID STEM MOUNTING POINTS ARE RECOMMENDED TO COUNTERACT THIS EFFECT (FIG. 1)

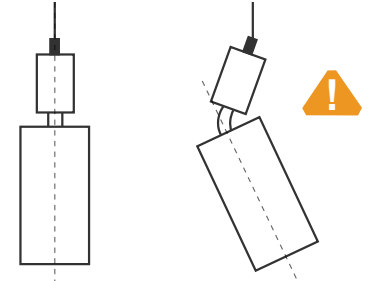
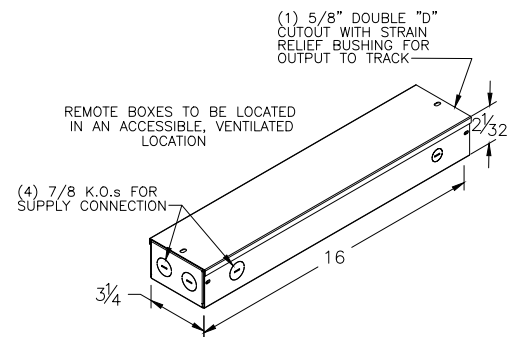


FIG. 1

### ELECTRICAL

- METROLINE IS A 48VDC, CLASS 2 SYSTEM AND IS AVAILABLE WITH 60W OR 100W (MAX.) REMOTE POWER SUPPLIES WITH UNV (120/277) VOLT INPUT
- FEED POINT FITTINGS ARE SUPPLIED WITH BLACK, 54" LONG 2-CONDUCTOR CORD FOR CONNECTION TO SURFACE-MOUNTED REMOTE POWER SUPPLY
- FEED POINT FITTINGS FOR CONCEALED REMOTE POWER SUPPLIES PROVIDED WITH 20FT OF 18/2 PLENUM-RATED CORD, AVAILABLE WITH EITHER WHITE OR BLACK JACKET
- REMOTE POWER SUPPLIES AVAILABLE WITHIN WHITE SHEET METAL ENCLOSURES (INTENDED TO BE CONCEALED) OR DECORATIVE SURFACE-MOUNTED ENCLOSURES FINISHED TO MATCH THE RAILS (FIG. 2)

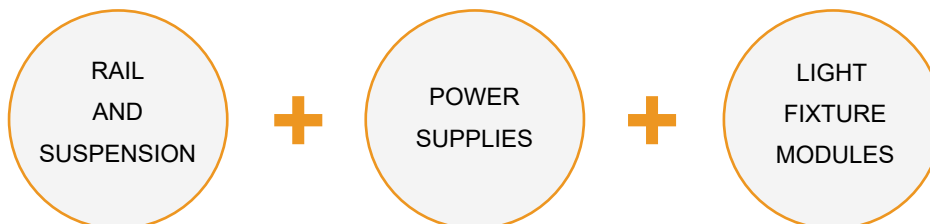


TYPICAL REMOTE DRIVER ENCLOSURE DETAIL

EACH ENCLOSURE CONTAINS ONE 60 OR 96 WATT CLASS 2 DRIVER, 48 VOLT, 1-10V DIMMABLE, 120-277V INPUT

FIG. 2

### SYSTEM COMPONENTS

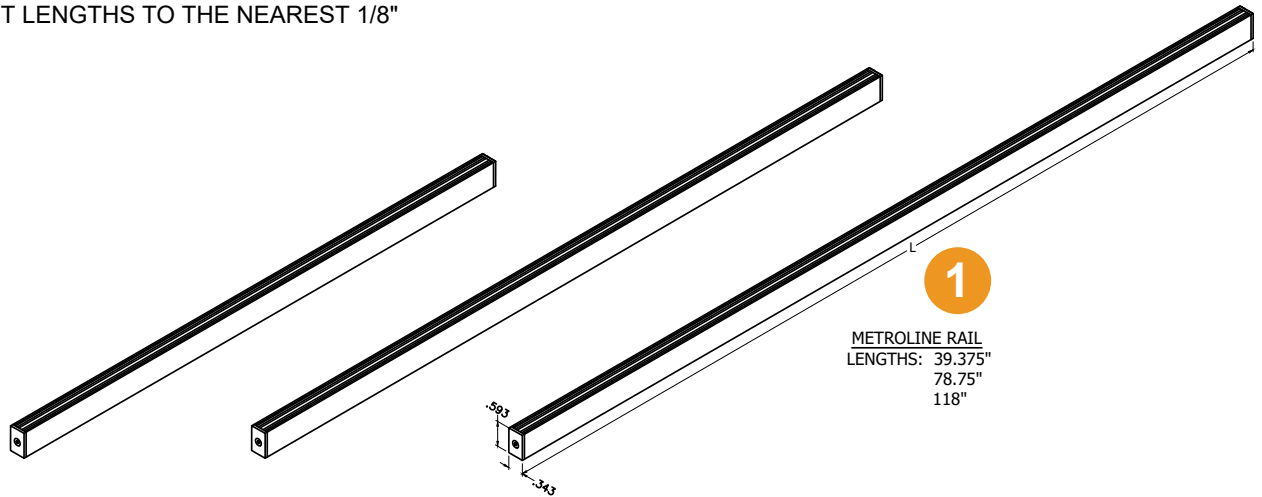


TO SPECIFY RAIL AND POWER SUPPLY OPTIONS FOR A COMPLETE SYSTEM, VISIT:

[HTTPS://COSINELTG.COM/METROLINE-SERIES/#RESOURCES](https://cosineltg.com/metroline-series/#resources)

## RAILS

- STANDARD MODULES AVAILABLE IN LENGTHS UP TO 118" (SINGLE CONTINUOUS MODULE)
- FACTORY-CUT LENGTHS TO THE NEAREST 1/8"



## SUSPENSION GEAR AND CONNECTORS

- RAIL MOUNTING SUPPORTS MUST BE SPACED AT A MAXIMUM OF 39" APART (OR CLOSER)
- AIRCRAFT CABLE OR RIGID STEM MOUNTING AVAILABLE
- STANDARD CABLE LENGTH IS 78" AND IS FIELD-ADJUSTABLE VIA SLIDE GRIP FITTING
- STEMS ARE 1/2" DIAMETER AND ARE AVAILABLE IN STANDARD 4" OR 8" LENGTHS
- STEMS DO NOT CARRY POWER TO RAIL SYSTEM (MUST INCLUDE **2** AT032A-00 POWER FEED CONNECTOR)

