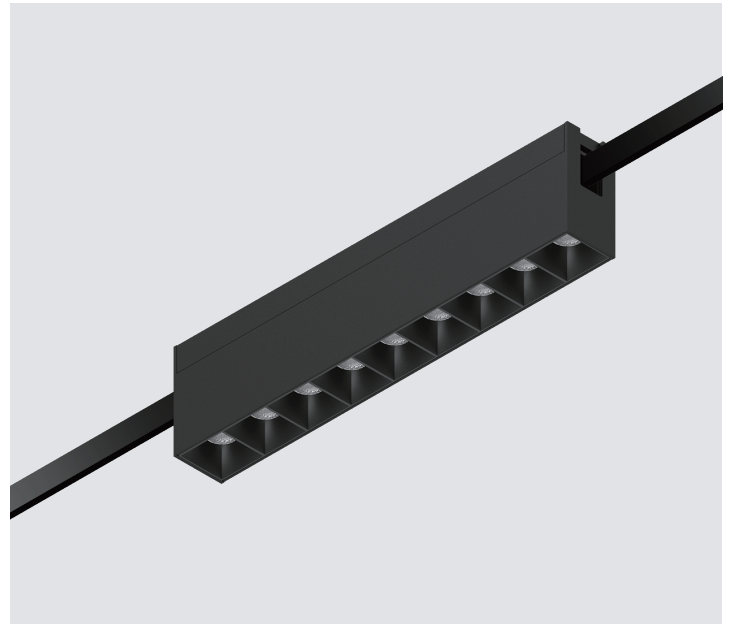


CUBIST FIXED

METROLINE LOW-VOLTAGE RAIL SYSTEM

As part of the Metroline Low-Voltage Rail System, these downlight modules provide targeted illumination of work surfaces or general ambient lighting without excessive glare. Ideal for office, retail and other environments where downlighting is required.



ORDERING INFORMATION

MODEL	CCT	FINISH	CRI	WATT	BEAM ANGLE	VOLT	DIMMING
ML-LBE-9185	27 2700K	W WHITE	90 90CRI	8.9 8.9 WATT	N 17 DEGREE	48 48 VOLT	N NON-DIMMING
	30 3000K	B BLACK					D 1-10V DIMMING (DOWN TO 5%)
	35 3500K						M 33 DEGREE
	40 4000K						W 48 DEGREE

EXAMPLE ORDERING CODE: ML-LBE-9185-27-W-90-8.9-N-48-N

LUMEN OUTPUT*

	ML-LBE-9185			
Wattage	8.9W			
CCT (90 CRI)	2700K	3000K	3500K	4000K
N (17°)	461 lm	481 lm	490 lm	500 lm
M (33°)	463 lm	483 lm	492 lm	502 lm
W (48°)	423 lm	441 lm	449 lm	458 lm

*DELIVERED LUMEN VALUES SHOWN ARE BASED ON EXTRAPOLATED DATA FROM 3000K 90 CRI PHOTOMETRIC TESTING.

THIS PRODUCT IS PART OF THE MODULAR METROLINE SYSTEM.
TO SPECIFY RAIL AND POWER SUPPLY OPTIONS FOR A COMPLETE SYSTEM, VISIT:

[HTTPS://COSINELTG.COM/METROLINE-SERIES/#RESOURCES](https://cosineltg.com/metroline-series/#resources)

FIXTURE SPECIFICATIONS

ML-LBE-9185

LED CHIPS

BRIDGELUX 2835 LED
INPUT POWER: 8.9W
5% DIMMING RANGE
52 LM/W AVERAGE EFFICACY

CONSTRUCTION

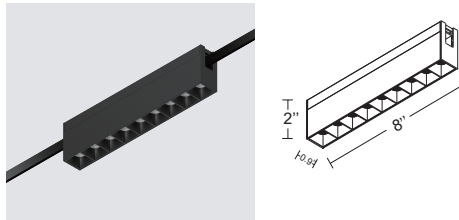
ALUMINUM BODY; BLACK AND WHITE PAINTED
FINISH OPTIONS

WARRANTY

5 YEAR WARRANTY

LISTINGS

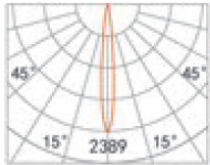
IP20, DRY LOCATION ONLY
ETL, CE



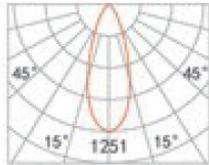
PHOTOMETRIC CURVES

ML-LBE-9185

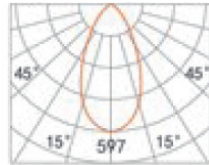
*UNIT: CD



AT 3000K, 90CRI
3000K- 17.5° BEAM



AT 3000K, 90CRI
3000K- 33° BEAM



AT 3000K, 90CRI
3000K- 48.9° BEAM

THIS PRODUCT IS PART OF THE MODULAR METROLINE SYSTEM.
TO SPECIFY RAIL AND POWER SUPPLY OPTIONS FOR A COMPLETE SYSTEM, VISIT:

[HTTPS://COSINELTG.COM/METROLINE-SERIES/#RESOURCES](https://cosineltg.com/metroline-series/#resources)